

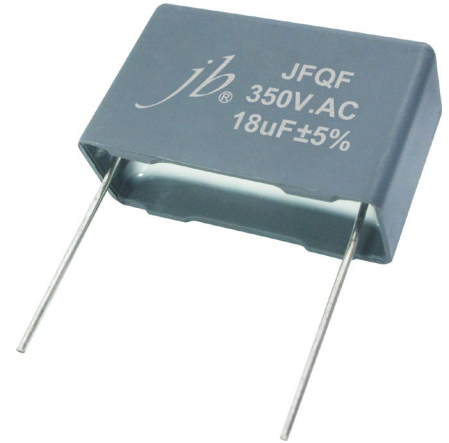
Metallized polypropylene film AC filter capacitors -JFQF

FEATURES

- High ripple current, high dv/dt withstand capability.
- Resistance to high voltage, with self-healing
- Low ESL and ESR
- Plastic case, epoxy resin sealing (UL 94V-0) Typical application
- Suitable for small power AC output filter, i.e UPS, Solar Photovoltaic DC/AC inverter with LCL filter

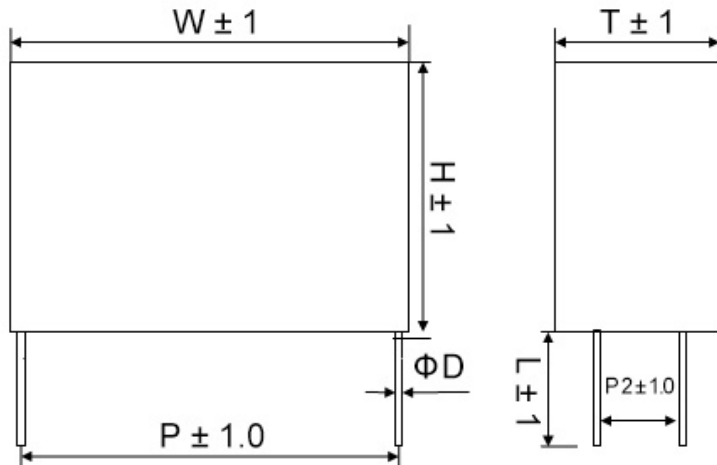
SPECIFICATIONS

Reference standards	GB/T17702 IEC61071
Operating Temperature	-40°C ~ +105°C
Voltage Rating	250VAC, 350VAC, 425VAC, 480VAC
Rated RMS Voltage (Urms)	180VAC, 250VAC, 300VAC, 350VAC
Maximum Continuous DC Voltage	300VDC, 475VDC, 560VDC, 600VDC
Capacitance Range	4uF ~ 60uF
Capacitance Tolerance	±5% (J) ±10% (K)
Insulation Resistance	≥5000S (100VDC, 25°C ±5°C, 60s)
Voltage test between terminals	1.5*Un (10S 25°C ±5°C)
Voltage test between terminals and case	3000V.AC (10S, 50/60Hz, 25°C ±5°C)
Dissipation Factor	tg δ ≤ 20*10 ⁻⁴ (25°C ±5°C, 1KHz)
Max. Altitude	2000m



Metallized polypropylene film AC filter capacitors -JFQF

DRAWING:



Dimensions Table for 300VDC:

(Unit : mm)

TYPE							
CAP (uf)	W±1	L±1.0	T±1.0	H±1.0	P±1.0	P2±1.0	d Ø±0.05
4.0	32	6	13	22	27.5	--	1
5.0	32	6	14	28	27.5	--	1
6.8	32	6	18	33	27.5	--	1.2
10.0	32	6	18	33	27.5	--	1.2
10.0	41	6	17	32	37.5	--	1.2
15.0	41	6	22	37	37.5	--	1.2
18.0	42	6	23	36	37.5	--	1.2
20.0	42	6	23	36	37.5	--	1.2
22.0	41	6	26	41	37.5	--	1.2
25.0	41	6	26	41	37.5	--	1.2
30.0	42	6	30	45	37.5	--	1.2
33.0	42	6	30	45	37.5	--	1.2
40.0	57	6	29.5	43.5	52.5	--	1.2
50.0	57	6	35	50	52.5	--	1.2
60.0	57	6	35	50	52.5	--	1.2

***Please contact us for special item or size not listed .**

Please visit our website to get more update data, those data & specification are subject to change without notice.

Metallized polypropylene film AC filter capacitors -JFQF

Dimensions Table for 475 VDC:

(Unit : mm)

TYPE							
CAP(uf)	W±1	L±1.0	T±1.0	H±1.0	P±1.0	P2±1.0	d Ø±0.05
1.0	32	6	9	18	27.5	--	1
1.5	32	6	11	20	27.5	--	1
2.0	32	6	13	22	27.5	--	1
2.2	32	6	13	22	27.5	--	1
2.5	32	6	13	22	27.5	--	1
3.0	32	6	15	24.5	27.5	--	1
3.3	32	6	15	24.5	27.5	--	1
3.5	32	6	14	28	27.5	--	1
4.0	32	6	18	33	27.5	--	1.2
4.5	32	6	18	33	27.5	--	1.2
4.7	41	6	15	26	37.5	--	1.2
5.0	32	6	18	33	27.5	--	1.2
5.0	42	6	14	28	37.5	--	1.2
6.0	41	6	17	32	37.5	--	1.2
6.5	41	6	17	32	37.5	--	1.2
6.8	32	6	22	37	27.5	--	1.2
6.8	41	6	18.5	33.5	37.5	--	1.2
7.5	41	6	18.5	33.5	37.5	--	1.2
8.0	41	6	22	37	37.5	--	1.2
10.0	41	6	22	37	37.5	--	1.2
12.0	41	6	26	41	37.5	--	1.2
15.0	41	6	26	41	37.5	--	1.2
18.0	41	6	28	43	37.5	--	1.2
20.0	42	6	30	45	37.5	--	1.2
22.0	42	6	30	45	37.5	--	1.2
25.0	57	6	29.5	43.5	52.5	20.3	1.2
30.0	57	6	29.5	43.5	52.5	20.3	1.2
35.0	57	6	35	50	52.5	20.3	1.2
40.0	57	6	35	50	52.5	20.3	1.2

***Please contact us for special item or size not listed .**

Please visit our website to get more update data, those data & specification are subject to change without notice.

Metallized polypropylene film AC filter capacitors -JFQF

Dimensions Table for 560 VDC

CAP(uf)	TYPE						
	W±1	L±1.0	T±1.0	H±1.0	P±1.0	P2±1.0	d Ø±0.05
1.0	32	6	11	20	27.5	--	1
1.5	32	6	13	22	27.5	--	1
2.0	32	6	15	24.5	27.5	--	1
2.2	32	6	15	24.5	27.5	--	1
2.5	32	6	14	28	27.5	--	1
3.0	32	6	18	33	27.5	--	1.2
3.0	41	6	15	26	37.5	--	1.2
3.3	32	6	18	33	27.5	--	1.2
3.3	41	6	15	26	37.5	--	1.2
3.5	32	6	18	33	27.5	--	1.2
3.5	42	6	14	28	37.5	--	1.2
4.0	32	6	18	33	27.5	--	1.2
4.0	41	6	17	32	37.5	--	1.2
4.5	41	6	17	32	37.5	--	1.2
4.7	32	6	22	37	27.5	--	1.2
4.7	41	6	17	32	37.5	--	1.2
5.0	32	6	22	37	27.5	--	1.2
5.0	41	6	18.5	33.5	37.5	--	1.2
6.0	41	6	18.5	33.5	37.5	--	1.2
6.8	32	6	22	37	27.5	--	1.2
6.8	41	6	22	37	37.5	--	1.2
8.0	41	6	22	37	37.5	--	1.2
10.0	41	6	26	41	37.5	--	1.2
12.0	41	6	28	43	37.5	--	1.2
15.0	42	6	30	45	37.5	--	1.2
18.0	57	6	29.5	43.5	52.5	20.3	1.2
20.0	57	6	29.5	43.5	52.5	20.3	1.2
22.0	57	6	29.5	43.5	52.5	20.3	1.2
25.0	57	6	35	50	52.5	20.3	1.2
28.0	57	6	35	50	52.5	20.3	1.2

***Please contact us for special item or size not listed .**

Please visit our website to get more update data, those data & specification are subject to change without notice.

Metallized polypropylene film AC filter capacitors -JFQF

Dimensions Table for 600 VDC

TYPE							
CAP(uf)	W±1	L±1.0	T±1.0	H±1.0	P±1.0	P2±1.0	d Ø±0.05
0.3	32	6	9	18	27.5	--	0.8
0.4	32	6	9	18	27.5	--	0.8
0.5	32	6	9	18	27.5	--	0.8
0.7	32	6	11	20	27.5	--	0.8
0.8	32	6	13	22	27.5	--	0.8
1.0	32	6	13	22	27.5	--	0.8
1.0	41	6	11	22	37.5	--	1
1.5	32	6	15	24.5	27.5	--	0.8
1.5	41	6	13	24	37.5	--	1
2.0	32	6	16	30	27.5	--	0.8
2.0	41	6	15	26	37.5	--	1
2.2	32	6	16	30	27.5	--	0.8
2.2	41	6	15	26	37.5	--	1
2.5	32	6	18	30	27.5	--	1
2.5	41	6	16	30	37.5	--	1
3.0	32	6	22	37	27.5	--	1
3.0	41	6	16	30	37.5	--	1
3.3	32	6	22	37	27.5	--	1
3.3	41	6	17	32	37.5	--	1
3.5	32	6	22	37	27.5	--	1
3.5	41	6	17	32	37.5	--	1
4.0	32	6	22	37	27.5	--	1
4.0	41	6	18.5	33.5	37.5	--	1
4.5	41	6	22	37	37.5	--	1
5.0	41	6	22	37	37.5	--	1
5.5	41	6	22	37	37.5	--	1
6.0	41	6	26	41	37.5	--	1
6.5	41	6	26	41	37.5	--	1
7.0	41	6	26	41	37.5	--	1
7.5	41	6	26	41	37.5	--	1
8.0	41	6	26	41	37.5	--	1
8.5	41	6	28	43	37.5	--	1
9.0	41	6	28	43	37.5	--	1
9.5	41	6	30	45	37.5	--	1

***Please contact us for special item or size not listed .**

Please visit our website to get more update data, those data & specification are subject to change without notice.

Metallized polypropylene film AC filter capacitors -JFQF

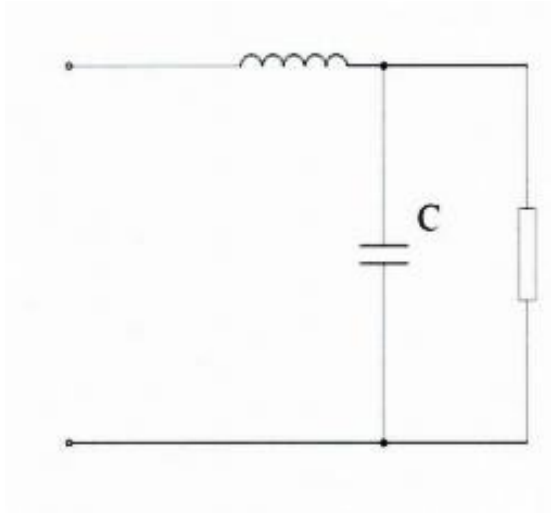
Dimensions Table for 600 VDC

CAP(uf)	TYPE						
	W±1	L±1.0	T±1.0	H±1.0	P±1.0	P2±1.0	d Ø±0.05
10.0	41	6	30	45	37.5	--	1
10.0	57	6	25	45	52.5	--	1.2
10.0	57	6	30	45	52.5	20.3	1.2
11.0	57	6	25	45	52.5	--	1.2
12.0	57	6	29.5	45	52.5	20.3	1.2
15.0	57	6	35	45	52.5	20.3	1.2
16.0	57	6	35	45	52.5	20.3	1.2
18.0	57	6	35	50	52.5	20.3	1.2
20.0	57	6	35	50	52.5	20.3	1.2
20.0	57	6	40	50	52.5	20.3	1.2
21.0	57	6	40	50	52.5	20.3	1.2
25.0	57	6	45	55	52.5	20.3	1.2
27.0	57	6	45	55	52.5	20.3	1.2
30.0	57	6	45	65	52.5	20.3	1.2

***Please contact us for special item or size not listed .**

Please visit our website to get more update data, those data & specification are subject to change without notice.

Typical circuit



Expected lifetime curve

