

JBR-3386 Trimming Potentiometers

FEATURES

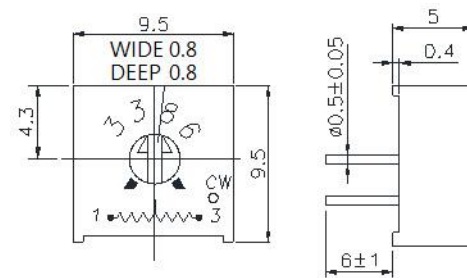
- Single Turn/ Cermet/ Industrial/ Sealed.
- Many Terminal Styles.

Electrical Characteristics	
Standard Resistance Range	10Ω - 5MΩ
Resistance Tolerance	±10% ; ±20% for 10, 20 and 2M ohm
Absolute Minimum Resistance	≤±1%R or 10Ω
Contact Resistance Variation	CRV≤±3%R or 5Ω (whichever is larger)
Insulation Resistance	R1≥1GΩ(500Vdc)
Withstand Voltage	640VAC
Effective Travel	260°

Environmental Characteristics	
Power Rating (300volts max)	0.5W@70°C, 0W@125°C
Temperature Range	-55°C ~ +125°C
Temperature Coefficient	±200x10 ⁻⁶ /°C (±100ppm/°C on request)
Temperature Variation	-55°C, 30min, +125°C/30min, 5 cycles ΔR≤±2%R.Δ(Uab/Uac)≤ ±2%R
Collision	390m/s2, 4000cycles, ΔR≤±1%R
Electrical Endurance at 70°C	0.5W@70°C, 1000h ΔR≤±(5%R+0.1Ω), CRV≤±3%R or 5Ω (whichever is larger)
Rotational Life	200 cycles ΔR≤±(10%R+0.5 Ω), CRV≤±3%R or 5 Ω (whichever is larger)

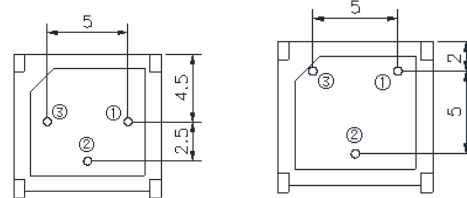
Physical Characteristics	
Starting Torque	≤35mN·m
Marking	Resistance Tolerance (When no identification, it is of ± 10%) Resistance Code, Model
Standard Packaging	50pcs, per tube

Common Dimensions

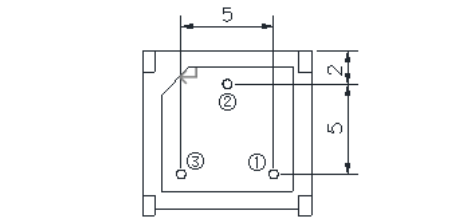


JBR-3386P

JBR-3386F

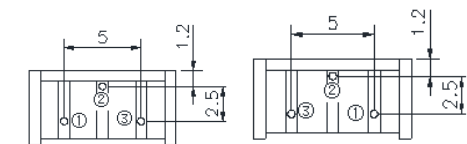


JBR-3386Y



JBR-3386H

JBR-3386G



JBR-3386W

JBR-3386C



Resistance Table

Resistance (Ohms)	Resistance Code
10	100
20	200
50	500
100	101
150	151
200	201
250	251
300	301
470	471
500	501
680	681
1,000	102
1,500	152
2,000	202
2,200	222
2,500	252
3,000	302
4,700	472
5,000	502
6,800	682
10,000	103
15,000	153
20,000	203
22,000	223
25,000	253
30,000	303
33,000	333
47,000	473
50,000	503
68,000	683
100,000	104
150,000	154
200,000	204
220,000	224
250,000	254
300,000	304
330,000	334
470,000	474
500,000	504
680,000	684
1,000,000	105
2,000,000	205
2,200,000	225
5,000,000	505

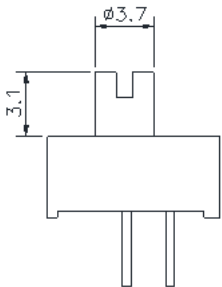
Special resistances available.

Please visit our website to get more update data, those data & specification are subject to change without notice.

JBR-3386 Trimming Potentiometers

JBR-3386

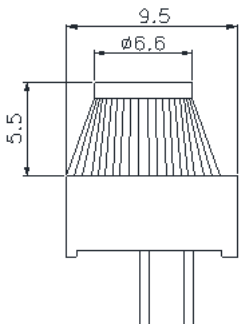
(STYLE)-EY5-(RESISTANCE CODE)



JBR-3386

(STYLE)-EY5-(RESISTANCE CODE)-T

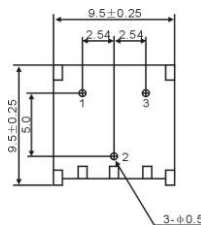
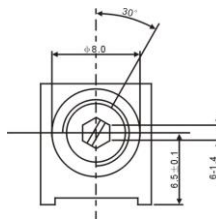
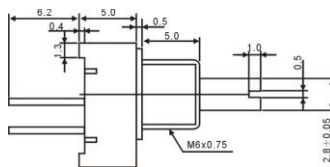
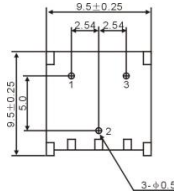
The Model 3386 is available with a knob for finger adjustment. Add suffix letter "T" to order code.



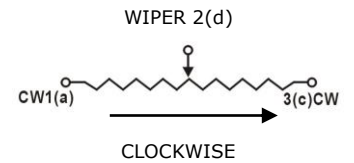
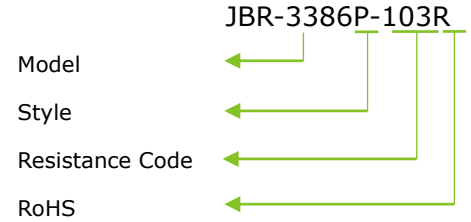
JBR-3386

F,K,P,R,U,Y-EY5

(RESISTANCE CODE)-L



How to Order

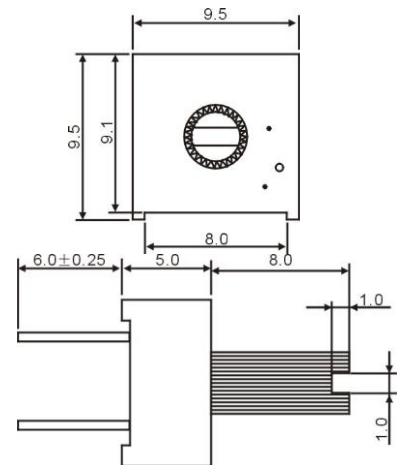


Tolerance is ±0.25 if no identification

JBR-3386

F,K,P,R,U,Y-EY5

(RESISTANCE CODE)-TL



Please visit our website to get more update data, those data & specification are subject to change without notice.